

SANCTUARY LAKES RESORT NEWS

December 3, 2019



WATER SAFETY TIPS

Being around water is part of everyday Australian life, whether it be at the beach, backyard pools and spas, rivers and creeks, public swimming pools or dams on farms.

However, did you know that drowning is one of the major causes of unintentional death for Australian Children?

According to Kidsafe Victoria, 18 Australian children aged 0-4 years drowned in 2017/18. The majority of these incidents occurred in backyard swimming pools.

Young children are especially at risk — they can drown in less than 2 inches (6 centimeters) of water. That means drowning can happen where you'd least expect it — the sink, fountains, buckets, inflatable pools, or small bodies of standing water around your home, such as ditches filled with rainwater.

Always watch children closely when they're in or near any water, for toddlers, this means being within arms reach so that you are able to help them stay safe. Kidsafe recommends that parents and carers take the following precautions to reduce the risk of child drowning.

Supervise

Never take your eyes off children around water. Active Supervision involves parents and carers keeping an eye on children at all times. Do not expect older children to look after their younger siblings. Children have short attention spans and can be easily distracted.

Article continued on page 3.



6 MONTHS TO GO!

The copper telecommunications network will be switching off in June 2020. This will cause many existing Telstra/Optus phone lines to cease operation.

This means any home which has not had its alarm panel upgraded with an NBN compatible (PermaConn) communicator will NO LONGER report to the Monitoring Station, which includes smoke alarm monitoring.

Did you know if you have already connected to NBN and not installed your PermaConn alarm communicator it may not be reporting correctly – in most cases not reporting at all.

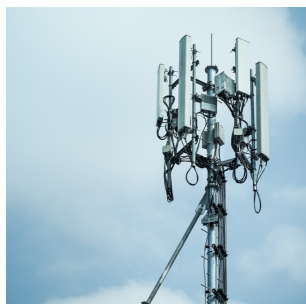
For more information please check out the Security page on our website <https://www.sanctuarylakesresort.com.au/index.php/resortfacilitie/security>, or call 9394 9472 to speak with our security team.



WALLABY CHILD CARE CENTRE

The new Wallaby Child Care Centre on Sanctuary Lakes North Boulevard opened for business on Monday 18 November 2019. We ask that residents be mindful of the increased traffic flow within the vicinity of the new child care centre.

For any further information regarding the new centre, please visit their website at: <https://www.wallabychildcare.com.au/index.html>



NEW MOBILE PHONE BASE STATION

Telstra has acknowledged that mobile network capacity has been limited for quite some time now in certain areas of Point Cook. Due to this, the need for a new telecommunication base station has been identified.

We have received confirmation from Telstra that an additional mobile phone base station will be installed at 1-5 Saltwater Promenade, Point Cook.

We believe this will help to improve the poor mobile phone signal coverage in the South side of Sanctuary Lakes.



WATER SAFETY TIPS CONTINUED

Supervise continued...

Remain within arms reach at all times. This will ensure that you can get to the child in time if something does go wrong.

Take children with you if you leave the pool area, even if for just a minute.

Restrict access

Restrict children's access to water through the use of safety barriers such as pool fencing.

Remove hazards such as pot plants and chairs well away from pool fences to avoid children climbing on to them and over the fence.

Do not prop any doors or gates open that allow children access to the pool area.

Create a safe play area for children away from bodies of water such as pools.

Knowledge

Enrol in a resuscitation course and update skills annually so you are able to respond in case of an emergency.

Resuscitation posters are a good reminder to keep around pools and spas.

If you would like some more information and tips on keeping children safe around water, there is a lot of material on the Kidsafe Victoria website <https://www.kidsafevic.com.au/water-safety/pool-fence-safety/preventing-child-drowning>. They also have helpful fact sheets that are available to download.





SUMMER GARDENING TIPS

It is important that we know how to look after our gardens so that they survive the warmer weather. Below are our summer gardening tips for your lawn, plants and vegetables.

Turf:

- Do not mow cool season grasses too closely as they are easily killed;
- As a rule of thumb, only remove one third of the grass sward at any one time;
- Fertilise all turf areas with a turf fertiliser.

Flowering Plants:

- Keep an eye out for Aphids, Scale, Mealy Bugs and Caterpillars on young plant growth;
- Spray roses for black spot and/or powdery mildew;
- Remove all dead and spent flowers from winter flower bulbs, but do not remove the foliage. The bulbs foliage will take in nutrients for next years flowers. Fertilise bulbs with a bulb fertiliser;
- Snails will be on the move. To control snails either use a snail bait trap or commercial snail and slug pellets. Pellets are toxic to both dogs and cats, so be careful;
- Gently remove all spent flower heads from plants such as Camellias.

Vegetables:

- It is a good idea to only plant one or two seedlings each month;
- This will have the effect of staggering the crop, thus ensuring that you have vegetables for a longer period of time;
- It also helps to ensure that you don't have an oversupply of the vegetable.





SLARC LETTERBOX GUIDELINES

Thinking of upgrading your letterbox? Here's a quick guide on all the do's before installation.

The location and design of a letterbox must accord with the requirements of Australia Post (please refer to Australia Post website for details).

The following samples are a number of recommended and approved designs for Lots within Sanctuary Lakes Resort.

NB: All styles, colours and the location of the Letterbox must be submitted to SLARC for review and final approval.



Styles outside the above recommended and approved designs can be considered, however, all designs must be submitted to SLRS for review and should have the following characteristics:

- Must not be a standard metal post box on a steel or wooden pole;
- No greater than a cube of 500mm x 500mm x 1200mm;
- Must be made from substantial material and have a street number of not more than 100mm in height;
- Can be constructed from the same material as the house and should be painted a similar colour;
- No bright colours;
- Lacework or elaborate wrought iron attached to the Letterbox will not be accepted;
- No illuminated letterboxes will be permitted.

Please submit a brochure or sketch design of your proposed letterbox to SLARC for assessment and approval in writing.

Submissions can be made to SLARC at arc@sanctuarylakes.com.au.



GARDENING SPOTLIGHT

This month we have the spotlight on *Pyrus calleryana* which is commonly known as the Manchurian Pear.

These trees are an excellent choice for restricted areas, such as carpark and along narrow medians. You may have noticed that they are planted in the carpark outside the Community Administration building.

They are adaptable to a wide range of site conditions including quite dry areas, slightly alkaline soils and areas prone to air pollution. They are able to handle intermittently wet, heavy soils and enjoy full sun.

They have dark green leaves and will change to a reddish-purple in Autumn.

We also have the pleasure of watching these trees produce abundantly large bunches of beautiful white flowers, sometimes with a pink tinge during Spring.



SECOND ROUND MAINTENANCE INSPECTIONS

As per our newsletter that was issued on the 5th of November 2019, our latest round of maintenance inspections were carried out on the 30th of October 2019, with initial letters being issued on the 31st of October 2019.

As the 28 day period has now lapsed, our compliance officers will be re-inspecting those properties who were sent an initial letter. If the required maintenance works are yet to be attended to at the time of re-inspection, a second letter will be issued.

The second letter gives the resident a final seven days to complete the required works before we instruct our garden maintenance contractor to complete the necessary works, bringing the property back to a satisfactory state.



WHAT'S ON

Around Sanctuary Lakes



Boulevard Wall Painting

Rendering of the boulevard wall along the southern side of the Gleneagles estate is almost complete with caulking the only remaining item before completion.



Branches

Thanks to ongoing irrigation, tree maintenance and pruning throughout the year we were lucky enough to not lose any trees during the high winds on November 21st. SLRS RM crew picked up a dozen ute loads of branches on the Friday after the wind storm.



Weeding

To get on top of the weeds around the resort we had all resort maintenance staff weeding the whole estate for the second half of last week. Supplementing the resort maintenance team were Mambourin who were in for three days as well as a contractor helping last Thursday. The resort is looking much better for it now.



Sea Grass

Over the past fortnight the lake crew removed a whopping 28.32 tonnes of sea grass from the lake.

The sea grass is dropped in a special area at the tip which is allocated to Veolia. It is then transported to their recycling plant at Bulla for processing.



COMMUNITY NOTICEBOARD

To advertise contact: communications@sanctuarylakes.com.au

*conditions apply

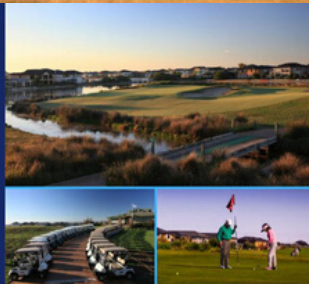


SANCTUARY LAKES
GOLF CLUB

DAYLIGHT SAVINGS SPECIAL



SANCTUARY LAKES
GOLF CLUB



DAYLIGHT SAVINGS SPECIAL

\$35

PLAY
UNLIMITED GOLF
AFTER 3PM

AVAILABLE 7 DAYS

Fee per entry. Terms & conditions apply. Limited time only.

PLAY UNLIMITED
GOLF AFTER 3PM

\$35

AVAILABLE 7 DAYS

Fee per entry. Terms and Conditions apply. Available for a limited time.



Follow [@sanctuarylakesgolfclub](https://www.instagram.com/sanctuarylakesgolfclub) on
Instagram and like us on Facebook

SANCTUARYLAKESRESORT.COM.AU