

SANCTUARY LAKES RESORT NEWS

May 18, 2021



UNSAFE DRONE OPERATIONS

We have recently had a few calls from residents regarding concerns with drones and who to report them to.

If you ever feel uncomfortable and want to report any unsafe drone operations, please go to the Civil Aviation Safety Authority's (CASA) Website: <https://www.casa.gov.au/drones/report-unsafe-drone-operations>

Here is a brief overview of some rules that apply to recreational drones, and what you can report:

- Drones must not be flown more than 120 metres above ground level.
- Drones must be kept at least 30 metres away from other people (unless they are helping handle the drone).
- You can only fly one drone at a time.
- Drones must always be kept within visual line of sight, meaning that you can see it with your eyes rather than through a device.
- Drones must not fly over people in a populous area.
- Drones must not record or photograph people without their consent.
- If a drone weighs more than 250 grams, it must be flown at least 5.5 kilometres away from a controlled airport.
- Drones cannot be operated in a way that creates a hazard to another aircraft, person or property.
- Drones must only be flown during the day.
- Drones cannot be flown through cloud or fog.
- Drones must not be flown over or near an area affecting public safety or where emergency operations are underway.
- Drones can be flown near a helicopter landing siren or small aerodrome without a control tower only if they are manoeuvred away and quickly landed once aware of a manned aircraft nearby.



UNSAFE DRONE OPERATIONS CONTINUED

- If drones are intended for work (commercially), there are extra rules.

For those who own recreational drones, we recommend that you sign up to CASA's Know Your Drone newsletter for new information and rules about drones.

For more information about drone rules please go to CASA's website.

ANNOUNCEMENTS



DID YOU KNOW YOU CAN REPORT FAULTY STREETLIGHTS

Reporting a streetlight through Powercor is a very simple process.

Go to their website by googling Powercor and click on Report a streetlight fault - CitiPower and Powercor. Or you can click on this link:

<https://www.powercor.com.au/outages/report-a-streetlight-fault/>

The website leads you to a map, where you can find the street light, press on it and report it.



A QUICK MESSAGE FROM CITY WATER WEST

Don't pour money down the drain.

Did you know that just one dripping tap can waste 4 litres of water a day and add hundreds to your water bill? It's easy to check for leaks around your home – simply:

- Place a cup under each tap while you are out of the house for the day – If there's more than a dribble in there when you return, you need to replace the washer.
- Put a few drops of food dye in the toilet cistern – if in 15 minutes your toilet bowl is anything but pearly white, you have a leak.

For more water saving tips check out the City West Water website.



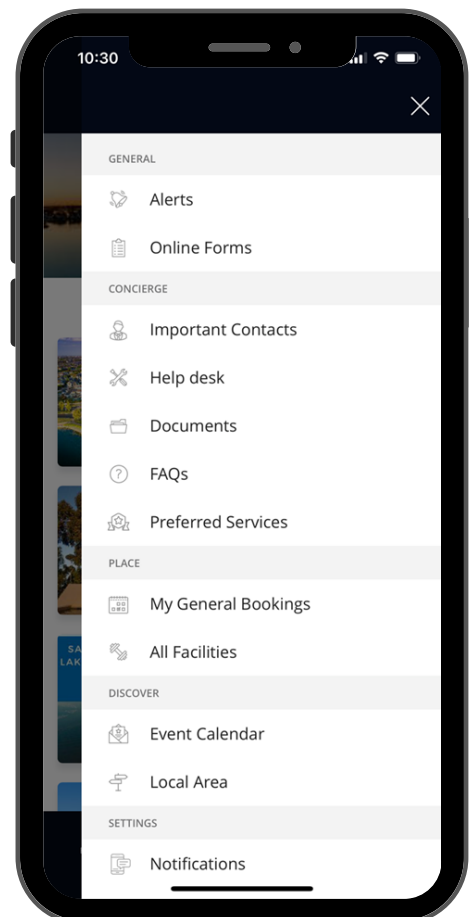
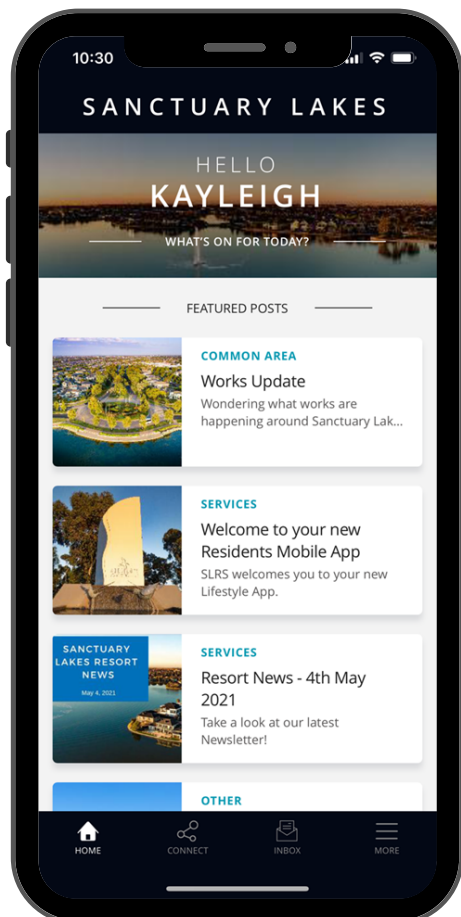
RESIDENT MOBILE APP ROLLOUT THROUGHOUT JUNE AND JULY

Select Residents have participated in our 'Soft Launch' of the Sanctuary Lakes Resort Services (SLRS) Resident Mobile App over the past few weeks. Below is some of the feedback received:

- "I love the new App, it looks great."
- "It certainly has some goodies."
- "Love the app, thanks!"

A survey will be released shortly to these residents; this will help us to gather feedback ahead of the wider release to all SLR residents.

Registrations for the App will be released in groups by Stages, with the first group kicking off from 1st June 2021 and the final group from 20th July 2021. This will help us to respond to any issues or enquiries during registrations within a timely manner. You will be notified directly, as to when and how you will be able to register and start using the Sanctuary Lakes Resort Services (SLRS) Resident Mobile App.





THE RECYCLING PROCESS FOR YOUR GLASS

Keeping the environment clean is important to us at Sanctuary Lakes and that is why we want to help you learn about how important your recycling is.

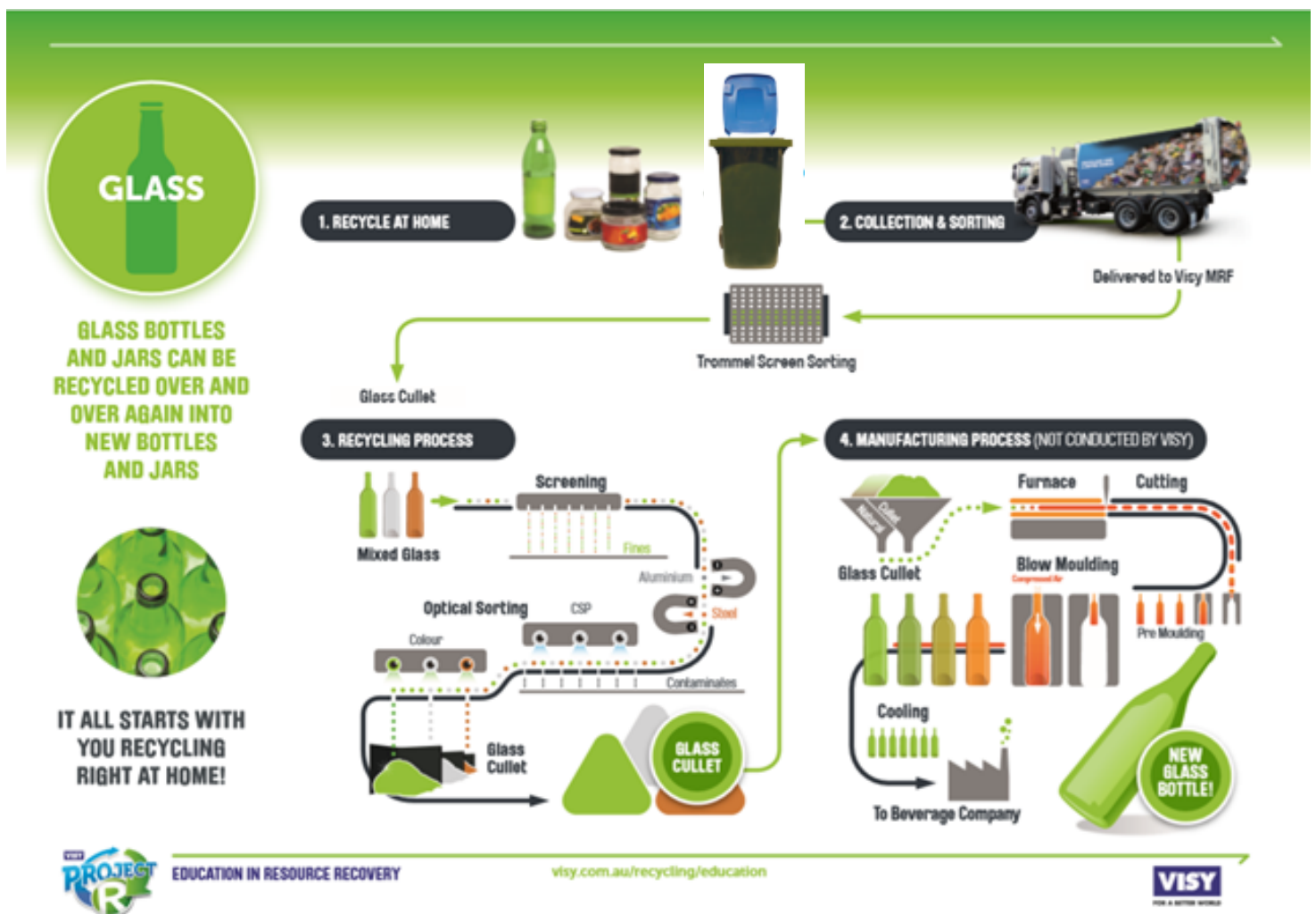
The process for recycling always starts at home. There are 5 types of material that you can recycle in your recycling bins: Paper and Cardboard, Glass, Hard Plastic, Aluminium and Steel.

What you recycle is delivered to a material recovery facility where it first goes through a manual and trommel screen sorting to separate the 5 types of materials.

To ensure your recycling efforts don't go to waste, please make sure to recycle correctly and remember to never tie soft plastics or rubbish bags around your recycling or they cannot be sorted and recycled.

Once screen sorted, glass goes through its recycling process where it goes through magnets that take away any attached aluminium and steel. They are then visually sorted by CSP and colour and broken into glass cutlets.

The glass cutlets will be transported to the furnace where they are melted and moulded into new glass bottles. These glass bottles then are sent to beverage companies where they can be reused.





WHY MULCH IS BETTER THAN BOXES?

At Sanctuary Lakes we LOVE our trees and this fortnight we delve a little deeper into why we use mulch around our street trees instead of boxes.

First and foremost, mulching helps to stop evaporation by conserving the amount of water used to water trees. When the mulch eventually rots down, it returns humus (soil microorganisms that decompose plant material) to the soil, which is extremely beneficial for the tree.

It is also very helpful in hiding the irrigation system, mulching can help to slow or even stop soil compaction at the base of the tree, which helps the trees thrive.

When your tree has mulch around the base it can also prevent any accidental ring barking damage to the tree and or the irrigation system through either mowers or brush cutters.

Mulching of the street trees is also unique to Sanctuary Lakes and sets us apart from other estates.

There are many reasons why we do not recommend tree boxes around street trees, here are just a few.

When tree boxes are against the trunk of a tree it has the potential to retain moisture and then cause the trunk to rot and/or create other diseases that may kill the tree.

Grass clippings that can pile up against the trunk in the box retain lots of moisture, which then creates a slimy substance neither, are good for the health of the tree.





WHY MULCH IS BETTER THAN BOXES?

Any rocks in tree boxes can be used as a means of breaking windows, particularly car windows, thus lowering your safety.

They also form a trip hazard in the nature strip and can cause harm to your family (especially little ones) or other residents and staff.

Tree boxes make it difficult for the maintenance team to work on or test the tree irrigation. If they are removed so that repair work can take place, they cannot be reinstated.

Additional plants planted in the tree boxes deprive the street trees of their water, taking away what they desperately need.



RESORT NEWS



KEEPING OUR BOULEVARD BEAUTIFUL



For a number of years, Sanctuary Lakes Resort has partnered with Mambourin to offer employment opportunities to people living with a disability.

The team assist our Resort Maintenance team with maintaining the gardens along the Boulevard.

Mambourin is one of the largest disability services in Melbourne's west. They connect people with opportunities to build practical life skills, try new things and get out into the community, and also offer a range of employment and training options. As a registered NDIS provider, Mambourin supports people to reach their individual NDIS goals and have a number of community hubs with inter-site transport, which makes a large selection of activities and choices more accessible.

Mambourin ADE Manager Lorraine says "we really value our partnership with Sanctuary Lakes Resort, our team love working with Greg and Mark, they are both so supportive".

SLRS would like to thank the team for all the amazing work they do to help keep our boulevard beautiful. We appreciate their dedication and enthusiasm for work and the contributions they make to the SLRS crew!



FIND-A-WORD!



Have you got a keen eye for finding words?
All the words here help the environment except 1... can you find it?

D	H	E	V	J	P	I	G	W	A	S	T	E	K	R
S	D	N	C	I	L	T	J	M	E	J	D	H	C	E
U	B	V	L	H	A	F	S	R	E	U	S	E	N	D
S	K	I	U	I	S	T	R	E	E	S	Y	L	B	U
T	E	R	N	B	T	G	K	C	X	N	R	C	P	C
A	A	O	P	T	I	U	E	Y	Q	E	E	A	A	E
I	L	N	F	G	C	S	F	C	E	W	Q	R	N	D
N	U	M	O	R	A	C	F	L	Z	S	D	T	G	M
A	M	E	G	N	T	A	P	E	W	P	F	O	L	Y
B	I	N	W	E	Z	N	J	V	O	A	P	N	A	C
L	N	T	O	L	R	S	W	P	A	P	E	R	S	T
E	I	Y	H	T	U	M	A	Q	W	E	V	I	S	Y
X	U	I	Q	T	S	Y	T	W	L	R	D	I	U	P
S	M	R	V	O	X	J	E	V	K	H	O	N	A	K
C	A	R	D	B	O	A	R	D	C	G	R	E	E	N

ENVIRONMENT
SUSTAINABLE
WATER
TREES
VISY
ENERGY
PAPER

BIN
PLASTIC
CANS
CARTON
REDUCE
CARDBOARD
BOTTLE

REUSE
RECYCLE
ALUMINIUM
GREEN
WASTE
NEWSPAPER
GLASS